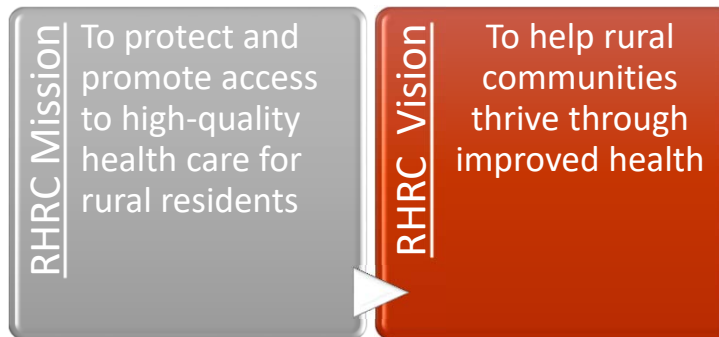


*Rural Emergency Hospital
Technical Assistance Center*

The Rural Health Redesign Center (RHRC)



The Rural Health Redesign Center Organization (RHRCO) was established in May of 2020 for the purpose of advancing rural health care both within Pennsylvania and beyond. It operates as a 501(c)3, not-for-profit organization.



The Rural Health Redesign Center Organization (RHRCO) leadership is passionate about its mission and looks to advance it through its guiding principles.

Our Guiding Principle

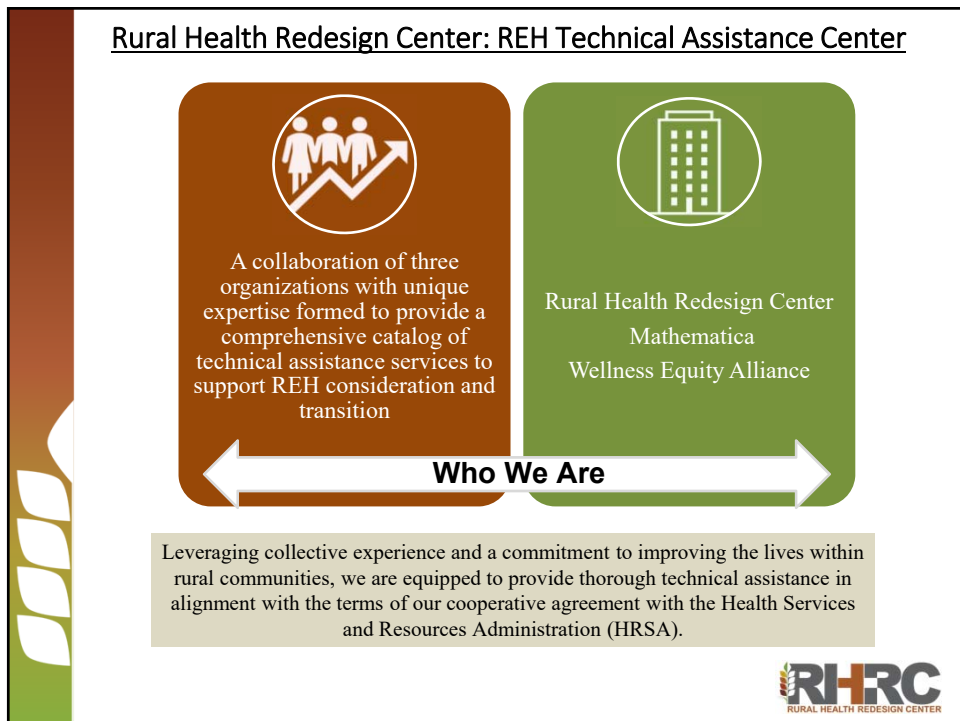
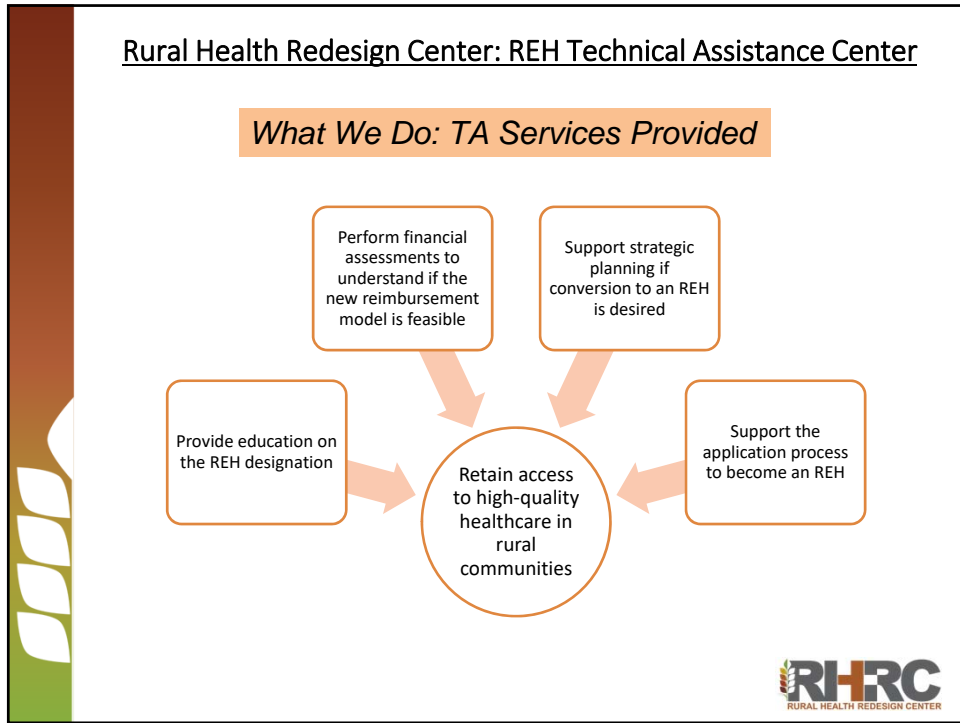
We will **Serve** with **Excellence** through **Rapid Response** to bring **Value** to **Every** partner community.

1. We are a **service** organization and exist to support rural providers and communities that need our assistance.
2. We perform our work with the highest degree of **excellence** with integrity and ethical standards.
3. We respond to all of our partners quickly through **rapid response** whenever feasible; acknowledging outreach and making a commitment to meet needs within a reasonable amount of time.
4. We provide **value** to our partners through providing high-quality, rural relevant technical assistance and consulting services.
5. We make this same commitment to **every** partner community and customer.



The Rural Health Redesign Center Organization (RHRCO) is uniquely positioned to support rural health evolution through its core competencies.






Rural Health Redesign Center: REH Technical Assistance Center

Our Approach

- Work cooperatively with HRSA, State Offices of Rural Health, and Flex Coordinators to identify interested hospitals
- Respond quickly to direct inquiries made through our support line: REHSupport@rhrc.org
- Provide education and perform an initial intake assessment
- Provide a rural-relevant subject matter expert/coach to provide 1:1 guidance and support
- Perform financial assessments where there is indication that the REH could be a viable option
- Support strategic planning once a community identifies that REH is a viable path forward
- Assist with the application and provide ongoing support throughout the conversion process



Rural Health Redesign Center: REH Technical Assistance Center

Education Stakeholder Engagement **1:1 Support**
Alternative Care Pathways Workforce Development
Application Support **Financial Modeling** **Strategic Planning**
Legislative Advocacy
Ongoing Support **Resources** Peer Learning


Interested in receiving support from the REH-TAC?

Scan the QR code and complete our brief request form. →



Learn more about this project or access the intake form at www.rhrc.org/reh-tac
For general inquiries, please contact the REH-TAC team at REHSupport@rhrc.org

Work of the REH-TAC is funded by the Health Resources and Services Administration (HRSA) of the U.S. Department of Health and Human Services



Early outreach to the REC-TAC is summarized below by organization type and types of inquires received thus far.

States with Inquiries

- Alaska
- Arizona
- California
- Georgia
- Idaho
- Illinois
- Iowa
- Kentucky
- Minnesota
- Montana
- Nebraska

Types of Inquires through the REH-Support Line

Type of Inquiry	September	October	November	Total
Education Inquiry				
Other		2		2
SORH		1		1
General Question				
Hospital	1			1
Non-Relevant				
Other	1	1		2
Process for REH Consideration				
Hospital	1	3		4
Feasibility Study				
State Organization			1	1
Total	3	7	1	11



Timelines for planned activities:

- Formal educational material development
- Modeling tool development
- Technical Assistance Advisory Counsel (TAAC) creation
- Early engagement with interested hospitals and states
- Development of FAQ document
- Engagement with other Technical Assistance partners

October – December 2022



- Hold webinar coordinated with HRSA –
- Initial modeling reviews with first Cohort of interested hospitals
- Feedback to HRSA on findings
- Engagement with other Technical Assistance partners
- Identification of potential early adopters

January – March 2023



- Potential for conversion requests as state licensure and regulations allow, and provided transition plan guidance is published.
- Provision of education
- On-going education and engagement with interested facilities
- Identification of second cohort of potential hospitals

April – June 2023



Rural Health Redesign Center: REH Technical Assistance Center

Contact Information

www.rhrco.org

Bill Bizzaro
REH Program Director
BB@rhrco.org

Janice Walters
REH Project Officer
jw@rhrco.org

REHSupport@rhrco.org

Work of the REH-TAC is funded by the Health Resources and Services Administration (HRSA) of the U.S. Department of Health and Human Services



Questions and Answers

