



Rural Emergency Hospitals Technical Assistance Resources

October 12, 2022

Tom Morris
Associate Administrator
Federal Office of Rural Health Policy (FORHP)

Kristi Martinsen
Director, Hospital State Division
Federal Office of Rural Health Policy (FORHP)

Vision: Healthy Communities, Healthy People



Background

- Increasing Rural Hospital Closures
 - 139 rural hospitals have [closed since January 2010](#)
 - Patients in affected communities are probably traveling between 5 and 30 or more miles to access inpatient care
 - Closures could resume after COVID-19 funding is gone
- Rural Emergency Hospitals may be a solution
 - Need for a new model of rural health care
 - CMS is currently in rule-making mode
 - REH could be a viable model for some communities
 - Legislative action by States is required



Rural Emergency Hospital Provider Type

- REH Statute – Consolidated Appropriations Act of 2021 (December 27, 2020), Section 125 – Medicare Payment for Rural Emergency Hospital Services
 - Critical Access Hospitals and rural hospitals with no more than 50 beds as of 12/27/20 are eligible.
 - REHs must:
 - Not provide acute care inpatient services
 - Not exceed an annual per patient length of stay of 24 hours
 - Outpatient Prospective Payment rate, plus %5; fixed monthly payment proposed to be \$268,294 (or \$3,219,528 annually) in 2023
- For more background information on the REH provider type:
[Rural Emergency Hospital](#) – brief from the National Advisory Committee for Rural Health and Human Services



REH Technical Assistance Funding Background

- Consolidated Appropriations Act FY 2022: “up to \$5M shall be available to establish by grant to public or non-profit private entities the REH TA program”
- Rural Emergency Hospital Technical Assistance Program – “The agreement includes \$5,000,000 within the total for Rural Hospital Flexibility Grants to establish the Rural Emergency Hospital Technical Assistance Program. This Program will provide technical assistance from existing State Flexibility Programs and other stakeholders to assist facilities in the implementation of the new Rural Emergency Hospital.” (House Bill 117 Report language, page 18)



Three Prong Approach to REH Technical Assistance

1. National Technical Assistance Center
 - Rural Health Redesign Center: <https://www.rhrco.org/reh-tac> ; REHSupport@rhrco.org
 - Resources for broad dissemination; 1:1 assistance throughout the process of conversion
2. Supplement to Medicare Rural Hospital Flex Grantees
 - Outreach and education
3. Supplement to HRSA partners
 - National Conference of State Legislators:
 - Tracking state activity on establishing laws on REH licensure:
<https://www.ncsl.org/research/health/rural-emergency-hospitals.aspx>
 - National Academy for State Health Policy
 - Developing model licensing language
 - <https://www.nashp.org/medicares-new-rural-emergency-hospital-designation-considerations-for-states/>



Rural Emergency Hospital Technical Assistance Center

The Rural Health Redesign Center (RHRC)

The Rural Health Redesign Center Organization (RHRCO) was established in May of 2020 for the purpose of advancing rural health care both within Pennsylvania and beyond. It operates as a 501(c)3, not-for-profit organization.

RHRC Mission To protect and promote access to high-quality health care for rural residents

RHRC Vision To help rural communities thrive through improved health

The Rural Health Redesign Center Organization (RHRCO) leadership is passionate about its mission and looks to advance it through its guiding principles.

Our Guiding Principle

We will **Serve with Excellence** through **Rapid Response** to bring **Value to Every** partner community.

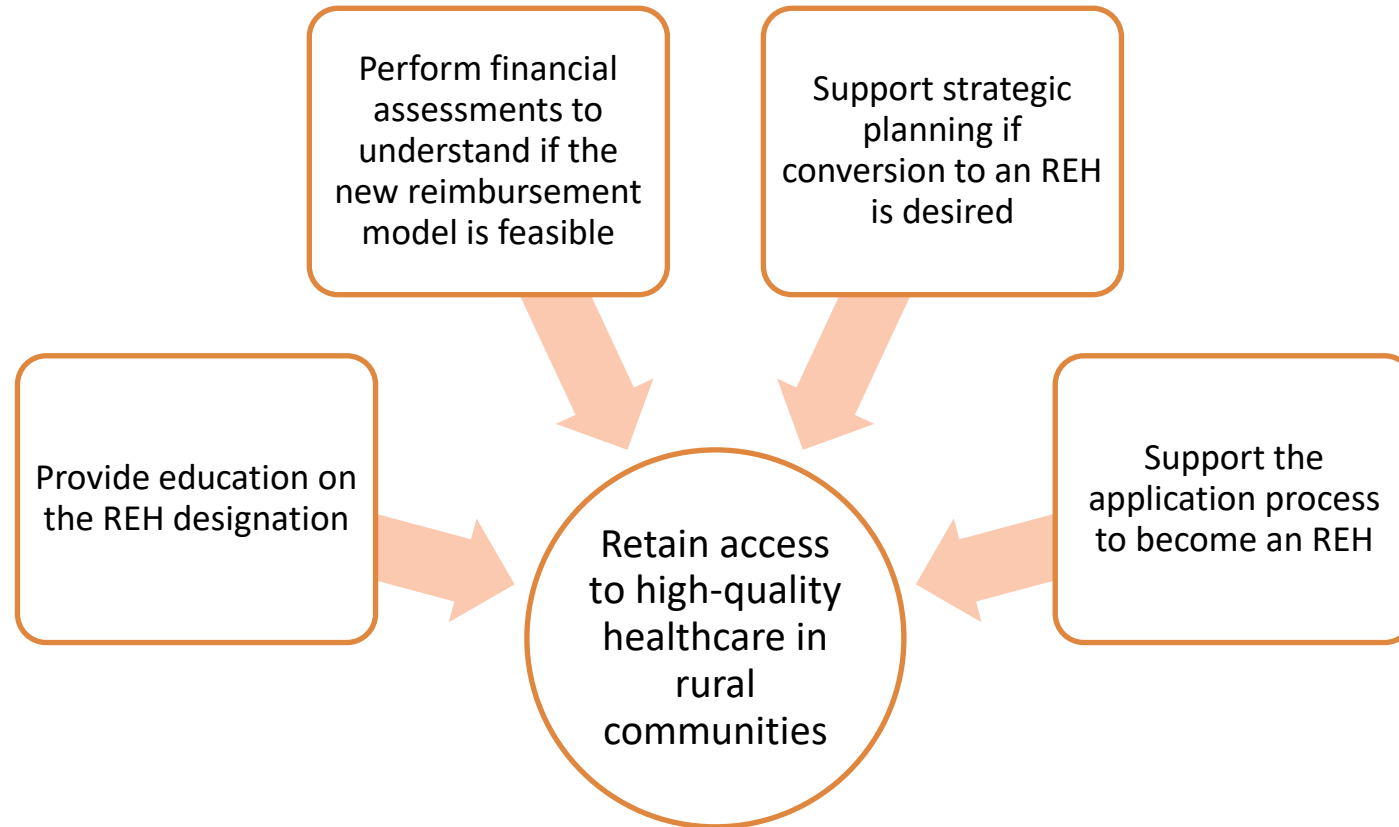
1. We are a **service** organization and exist to support rural providers and communities that need our assistance.
2. We perform our work with the highest degree of **excellence** with integrity and ethical standards.
3. We respond to all of our partners quickly through **rapid response** within 1 business day whenever feasible; acknowledging outreach and making a commitment to meet needs within a reasonable amount of time.
4. We provide **value** to our partners through providing high-quality, rural relevant technical assistance and consulting services.
5. We make this same commitment to **every** partner community and customer.

The Rural Health Redesign Center Organization (RHRCO) is uniquely positioned to support rural health evolution through its core competencies.



Rural Health Redesign Center: REH Technical Assistance Center

What We Do: TA Services Provided



Rural Health Redesign Center: REH Technical Assistance Center



A collaboration of three organizations with unique expertise formed to provide a comprehensive catalog of technical assistance services to support REH consideration and transition

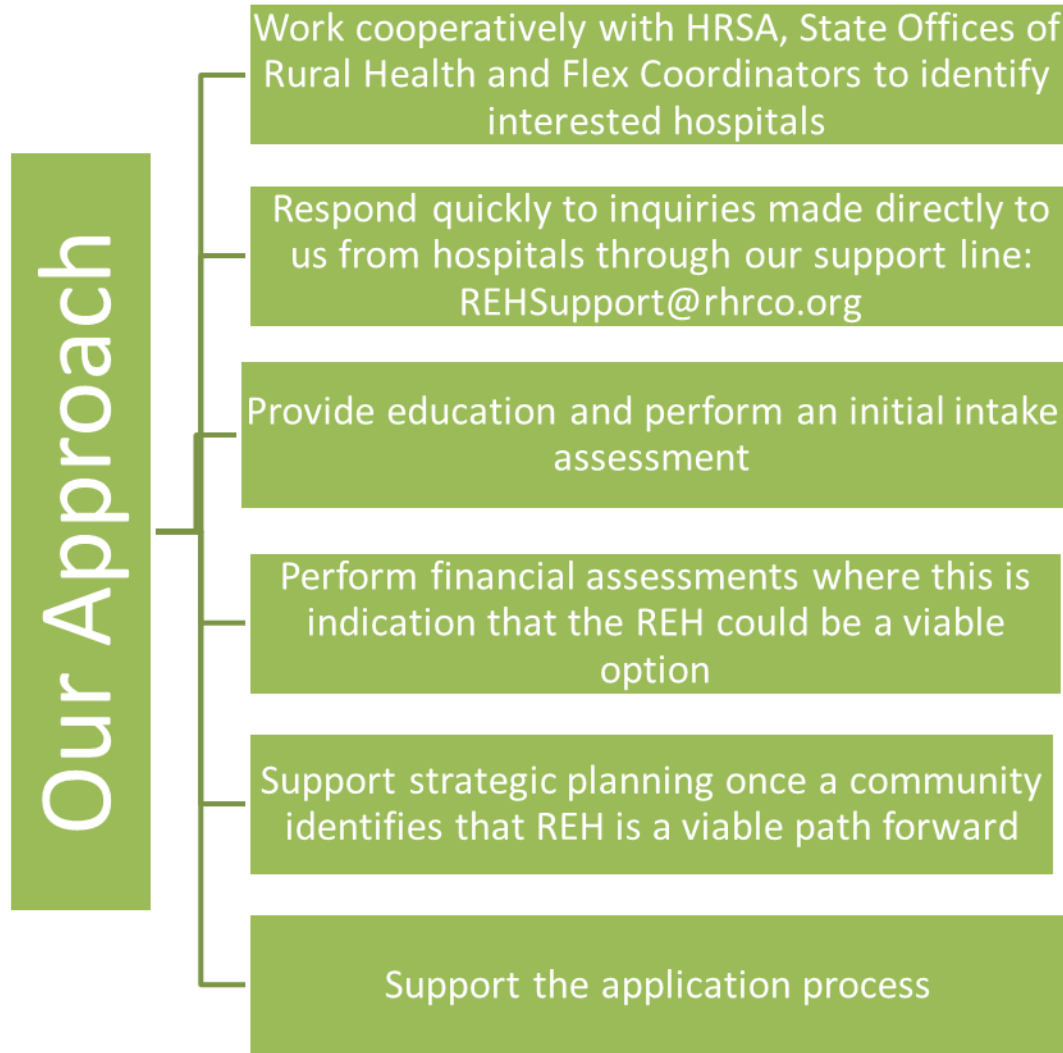


Rural Health Redesign Center
Mathematica
Wellness Equity Alliance

Who We Are

Leveraging collective experience and a commitment to improving the lives within our rural communities, we are equipped to provide thorough technical assistance in alignment with the terms of our cooperative agreement with the Health Services and Resources Administration (HRSA).

Rural Health Redesign Center: REH Technical Assistance Center



Rural Health Redesign Center: REH Technical Assistance Center

How Can You Learn More?

- Visit our website: <https://www.rhrco.org/reh-tac>
- Send an inquiry to rehsupport@rhrco.org

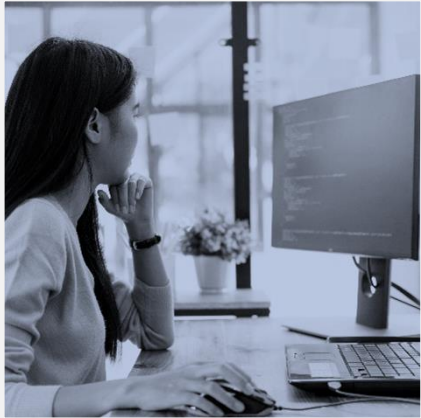


Rural Emergency Hospitals: State Actions

Oct. 12, 2022

Kate Blackman, Vice President, State Policy & Research

How NCSL Strengthens Legislatures



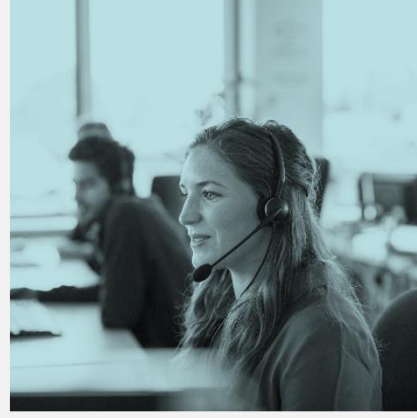
Policy Research

NCSL provides trusted, nonpartisan policy research and analysis



Connections

NCSL links legislators and staff with each other and with experts



Training

NCSL delivers training tailored specifically for legislators and staff



State Voice in D.C.

NCSL represents and advocates on behalf of states on Capitol Hill



Meetings

NCSL meetings facilitate information exchange and policy discussions

State Actions: REHs and Other Rural Health Facilities



- At least **three states** have enacted legislation to establish REH licensure.
 - Kansas HB 2208 (2021)—Creates a category of licensure to enable certain hospitals to receive federal reimbursement as rural emergency hospitals.
 - Nebraska LB 697 (2022) —Provides for the licensure of rural emergency hospitals and requires coverage for REH services.
 - South Dakota HB 1123 (2022) —Establishes licensure for rural emergency hospitals.
- At least **21 states** have established licensure requirements for free-standing emergency departments.

State Legislative Tracking – Beginning 2022



NATIONAL CONFERENCE OF STATE LEGISLATURES

Health Costs, Coverage and Delivery State Legislation

Topic Search

- Market
- Payment and Delivery Reform
- Medicaid
- Telehealth

Filters

Years

- 2022

Status

- Enacted

States

- Select all
- Alabama
- Alaska
- American Samoa
- Arizona
- Arkansas
- California
- Colorado
- Connecticut
- Delaware
- District of Colum...

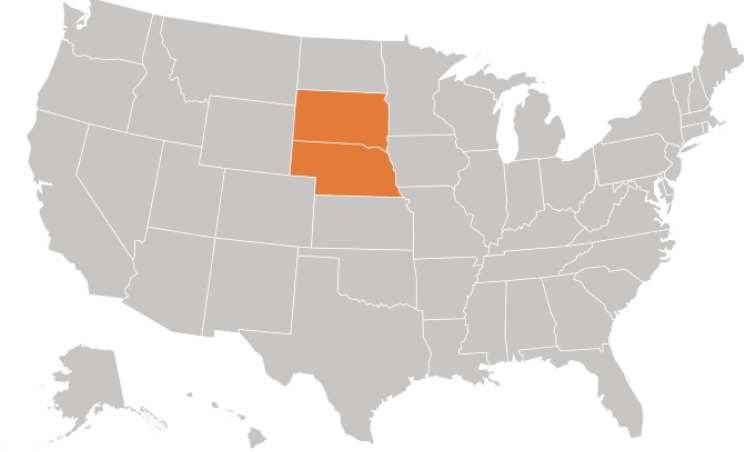
Bills

2

States

2

Clear Filters



Summary Text Search

Select multiple boxes/states by using CTRL+Click

STATE	BILL	YEAR	STATUS	CATEGORY	SUBCATEGORY	SUMMARY
Nebraska	L 697	2022	Enacted	Market	Payment and Delivery Reform	Provides for licensure of rural emergency hospitals, requires coverage for rural emergency hospital services.
South Dakota	H 1123	2022	Enacted	Market	Payment and Delivery Reform	Establishes licensure for rural emergency hospitals.

What's Next?

- Legislative Tracking (Ongoing)
- REH Webpage Updates (Ongoing)
- REH Webinar (Spring 2023)
- REH Policy Publication (Summer 2023)

NCSL Resources

- [Rural Emergency Hospitals](#)
- [Health Costs, Coverage and Delivery State Legislation](#)
- [NCSL Rural Health Resources](#)



Thank You!

Kate Blackman, VP of Policy & Research, Kate.Blackman@ncsl.org

Kelly Hughes, Associate Director, Kelly.Hughes@ncsl.org

Rural Emergency Hospitals

Rebekah Falkner, Senior Policy Associate

October 12, 2022



NATIONAL ACADEMY
FOR STATE HEALTH POLICY

About NASHP

For over 35 years, the **National Academy for State Health Policy** (NASHP) has been a nonpartisan organization committed to developing and advancing state health policy innovations and solutions.

NASHP provides a unique forum for the productive exchange of strategies across state government, including the executive and legislative branches.



NASHP's Mission and Vision



Vision

To improve the health and well-being of all people across every state.



Mission

To be of, by, and for all states by providing nonpartisan support for the development of policies that promote and sustain healthy people and communities, advance high quality and affordable health care, and address health equity.

How NASHP Accomplishes Our Mission

Health and
Human Services
Secretaries

Medicaid
Directors

Behavioral Health
Directors

Insurance
Commissioners

Governor's
Advisors

State Legislators

Medical Directors

Title V & CYSHCN
Directors

State Based
Marketplaces

Health Equity
Officers

Career and
Program Staff

Aging and
Disability
Directors

Public Health
Directors

Rural Emergency Hospital TA

Landscape
review

State REH
regulatory
language

Implementation
resources

Peer-to-peer
learning

Thank you!



NATIONAL ACADEMY
FOR STATE HEALTH POLICY

nashp.org



[@NASHPhealth](https://twitter.com/NASHPhealth)



[@NASHP](https://www.linkedin.com/company/nashp)

Questions



Technical Assistance Needs

How can our TA resources best support you?

- What questions do you have that would help to have answered?
- What resources would help you:
 - Better make the decision?
 - Help support in thinking about operations as an REH?

Add your thoughts in the chat.





Connect with HRSA

Kristi Martinsen, kmartinsen@hrsa.gov

To learn more about our agency, visit

www.HRSA.gov



Sign up for the HRSA *eNews*

FOLLOW US:

